



USB Instruments

**EasyLogger for DS1M12 "Stingray"
Help**

Table of Contents

Part I Introduction	3
1 Welcome to EasyLogger for DS1M12	3
2 EasyLogger Features	4
Part II Installing EasyLogger	5
1 Installing the EasyLogger Software	5
2 Installing the USB Drivers	10
Part III Using EasyLogger for DS1M12	13
1 EasyLogger Overview	13
2 Front Panel Functions	14
Start Button	14
Stop Button	15
Sample Interval	16
Channel Enable Buttons	17
Slide Bar	18
Scale Panel	19
3 Toolbar Buttons	20
Open Chart	20
Save Chart	21
Print Chart Area	22
Copy Chart to Clipboard	23
Zoom In/Out	24
Zoom Full	25
Cursors	26
TestMode Waveform	28
Signal Generator	29
Memo Window	30
Info Window	31
X-Control Window	32
Y-Control Window	33
4 Sub Panel Functions	34
Signal Generator Window	34
Memo Window	35
Info Window	38
X-Control Window	39
Y-Control Window	40
5 Menu Functions	42
File Menu	42
Run Menu	43
Edit Menu	44
View Menu	48
Window Menu	50
Help Menu	51

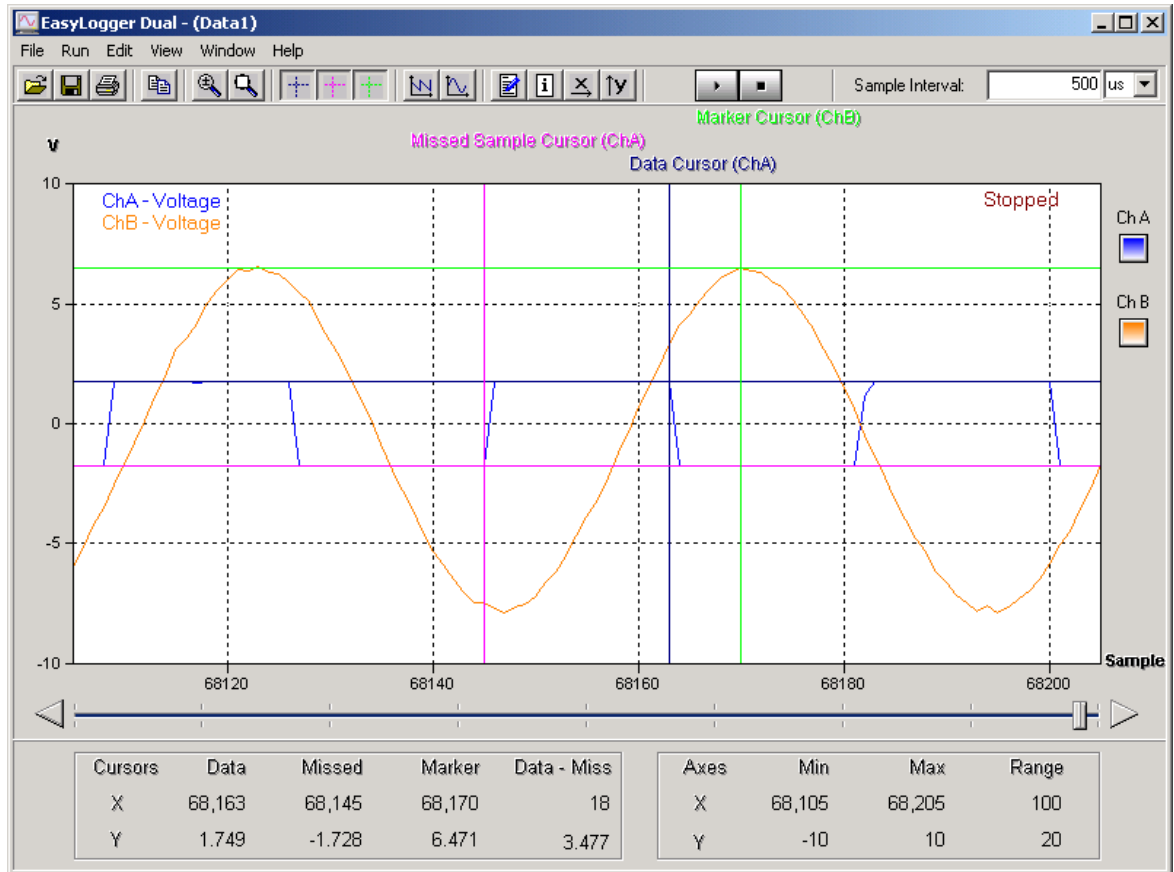
6 Quitting EasyLogger	52
Part IV Appendix	53
1 Error Messages	53
RBF File Not Found	53
Failed to Configure DS1M12	54
DS1M12A B Not Found	55
FT_Write - General IO Error	56
FT_GetQueueStatus - General IO Error	57
2 Uninstalling EasyLogger	58
Index	60

1 Introduction

1.1 Welcome to EasyLogger for DS1M12

EasyLogger is the easy to use but powerful data logging application program for the USB Instruments DS1M12.

It runs on any USB 1.1 or USB 2.0 equipped PC using Windows 98, ME, 2000 or XP.



1.2 EasyLogger Features

- Attractive, easy to use visual display
- 1MHz digital sampling rate
- Input saturation ranges from 0.2 V to 20 V
- 2 logging channels
- Signal Generator output
- Integrated switch to halt data capture through hardware
- User-defined sampling rate
- O.S.D. markers for voltage measurement
- O.S.D. markers for time measurement
- Save screens to Windows BMP files
- Export data to CSV and text files
- Load saved traces for display and export to other formats
- Screen printout facility
- Memo functions to comment data
- AC/DC coupling support
- Support for x1 and x10 probes
- User-defined display colour themes

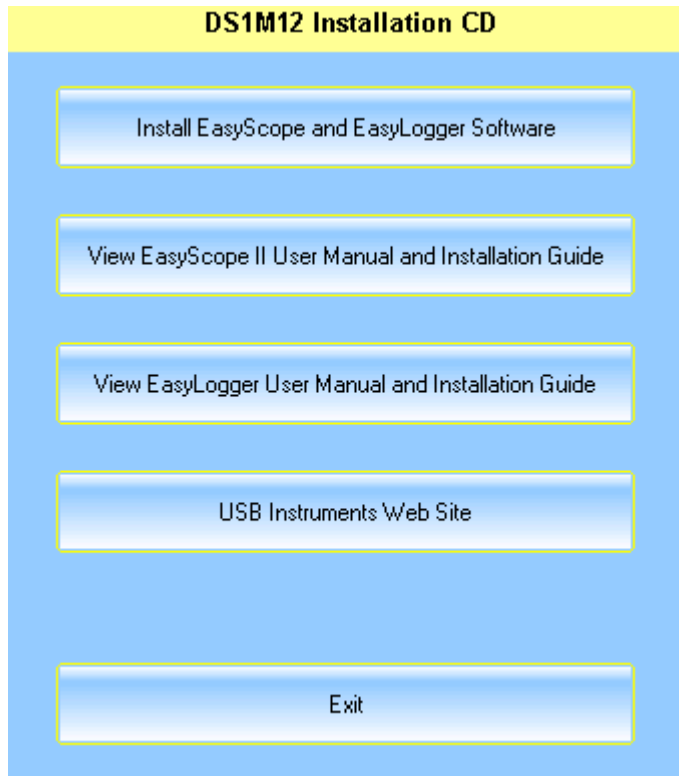
2 Installing EasyLogger

2.1 Installing the EasyLogger Software

Before connecting the instrument to the PC, insert the supplied installation disk into the CD-ROM drive of your PC. The following menu will appear after a few seconds.

The EasyLogger program is installed with the EasyScope II program.

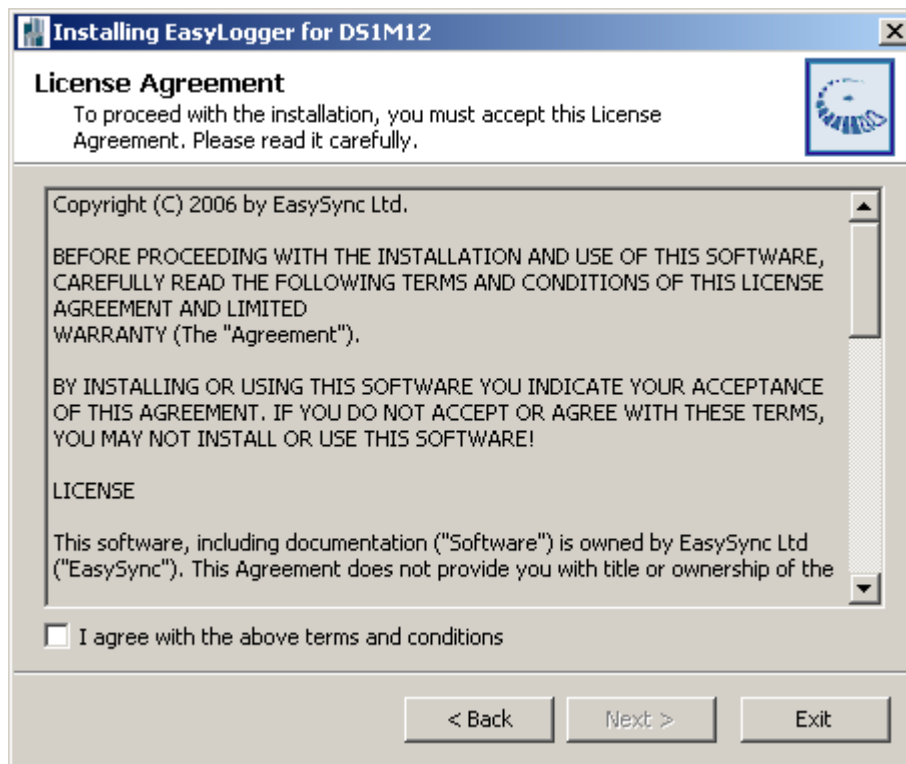
Before connecting the instrument to the PC, insert the supplied installation disk into the CD-ROM drive of your PC. The following menu will appear after a few seconds.



Click on the "Install EasyScope" button to launch the EasyScope installation program. The following screen will appear:

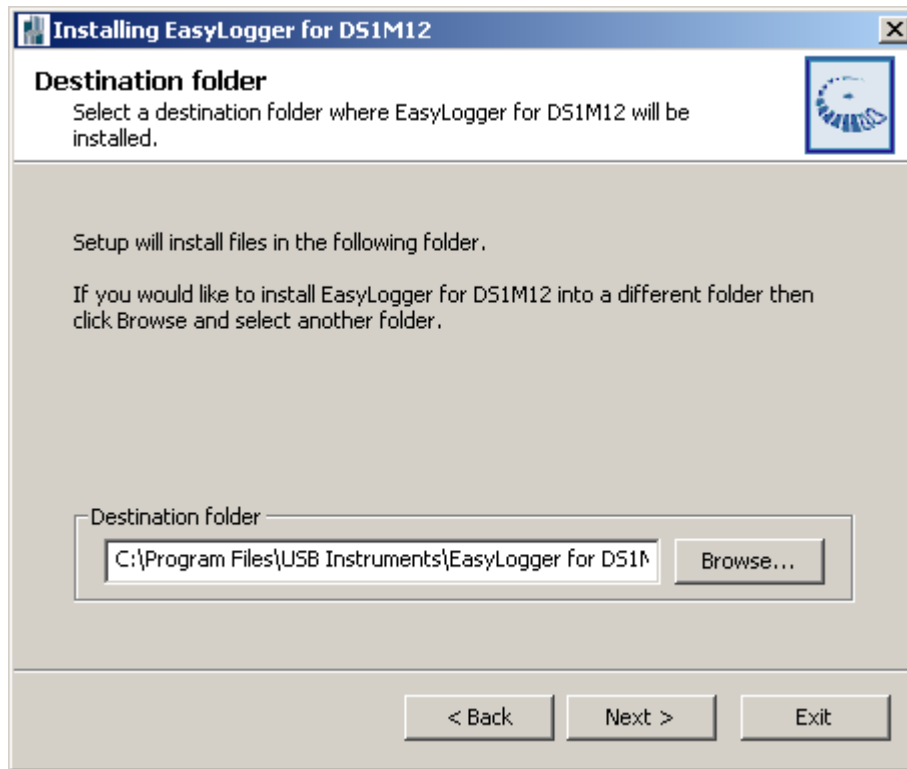


Click on the "Next" button to bring up the License Agreement Screen.

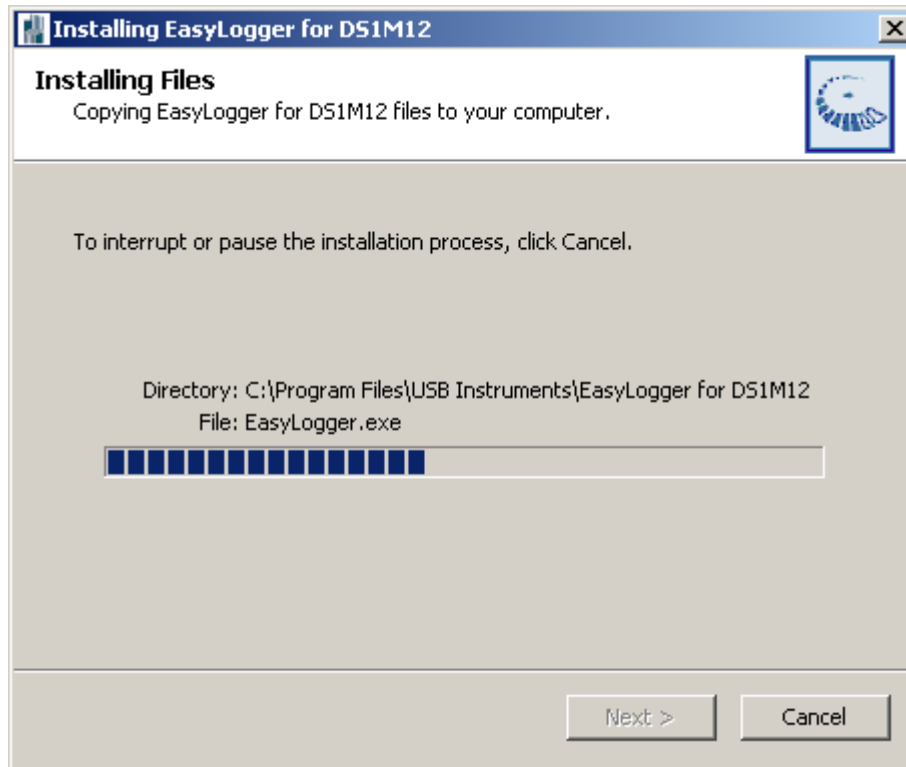


If you agree with the terms and conditions of the License Agreement, check the "I agree" box and

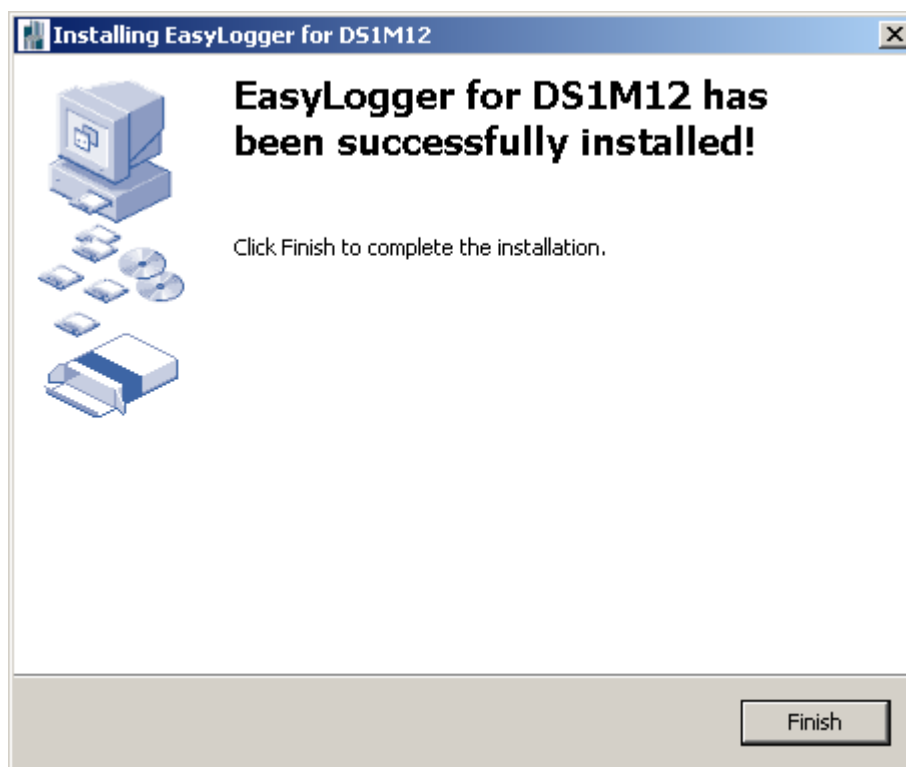
click on the "Next" button to continue the installation process else click on the "Exit" button. The "Next" button is disabled if you do not agree to the terms and conditions. Agreeing to the terms and clicking on the "Next" button brings up the following screen.



Select the directory you wish to install the EasyScope software into. A default directory is shown on the screen. Unless you have good reason to change it we suggest you use the default suggested by the installation program. Click on the "Next" button to commence copying the files to the EasyScope program directory.



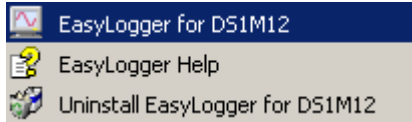
A progress screen (shown above) will appear as the files are installed. After a few seconds you should see the "Installation was completed successfully" message. Click on the "OK" button to complete the final stage of the installation process.



The installation process is now complete. You can launch the EasyLogger program from the desktop by double-clicking on the EasyLogger icon (pictured below).



You can also launch the EasyLogger program from the Start -> Programs -> EasyLogger for DS1M12 menu on the Windows Toolbar.



As shown above, you also have access to the EasyLogger Help files and Program Uninstaller from there.

Before using EasyLogger, the USB drivers need to be installed. This is done by plugging the instrument into a spare USB port on the PC. The instrument should be plugged into a USB hub port of your PC or alternatively, a self-powered USB hub (one that has it's own power supply).

If this is the first time that the instrument has been plugged in, Windows will then request the USB drivers for your product. See [Installing the USB Drivers](#) for further details.

2.2 Installing the USB Drivers

Before using EasyLogger the USB drivers need to be installed. This is done by plugging the instrument into a spare USB port on the PC. The instrument should be plugged into a USB hub port of your PC or alternatively, a self-powered USB hub (one that has it's own power supply).

If this is the first time that the instrument has been plugged in, Windows will request the USB drivers for your product and will display a Found New Hardware Wizard dialog box. The example below is for Windows 2000 but the procedure is very similar for other Windows versions.

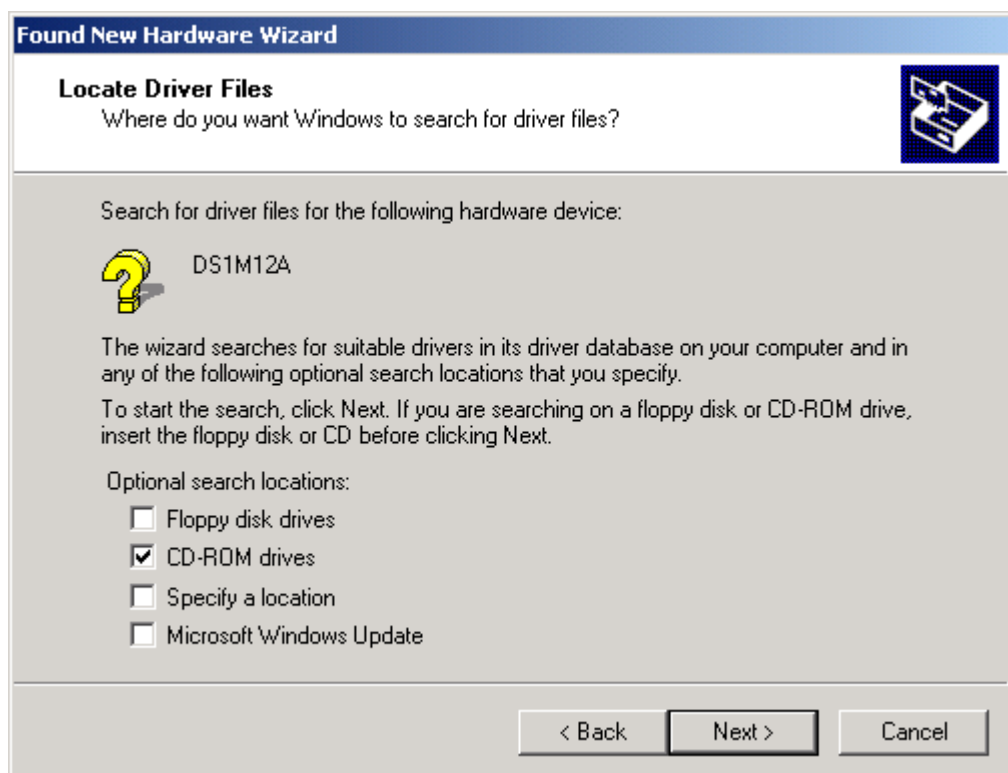
Connect the instrument to a spare USB port on the PC or self-powered hub. The following screen will appear to begin guiding you through the driver installation.



Click "Next" to proceed with the installation. The following screen will appear:



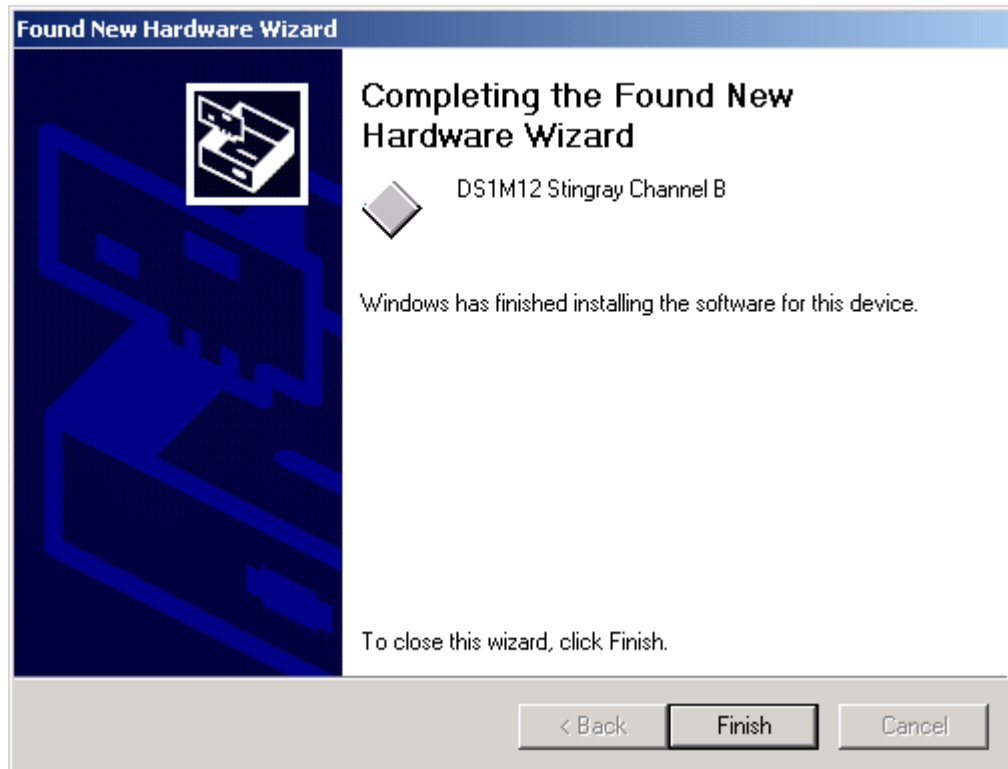
Select the option box for "Search for a suitable driver for my device (recommended)" and click "Next".



Check the box for "CD-ROM drives" and un-check all others.

NOTE: If the CD is not available and the EasyLogger software has already been installed, then check the "Specify a location" box and use the Browse button to select the "drivers" sub-directory of the EasyLogger Program Files directory instead.

Keep Clicking on "Next" until the installation is finished as per the screen below.



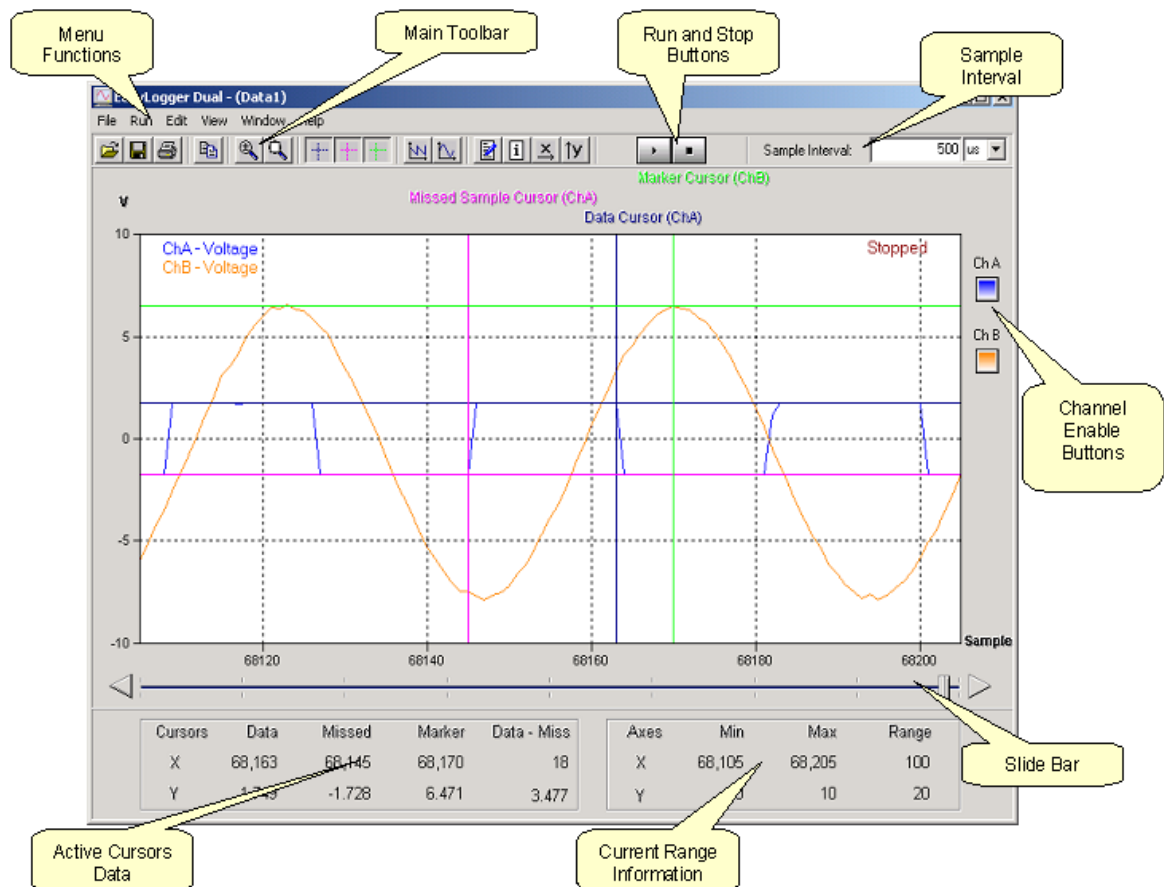
Click "Finish" to complete the installation of the first device.

If using Windows 2000, the second device will be installed automatically. For other versions of Windows, the above process may need to be repeated to complete the instrument installation.

3 Using EasyLogger for DS1M12

3.1 EasyLogger Overview

The EasyLogger has a simple layout with easy to use controls. The main controls and features are highlighted below. A full explanation of each feature is provided in the sections that follow.



3.2 Front Panel Functions

3.2.1 Start Button

Clicking the Start Data Logger button will commence data capture.



Please note that the controls for altering the sampling rate and vertical scales are disabled while the data logger is running.

When running, a caption appears at the top right of the data window which says "Running".

3.2.2 Stop Button

Clicking the Stop button will halt data capture.

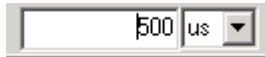


The sampling rate and vertical scale controls will be enabled after the stop button has been clicked.

When stopped, a caption appears at the top right of the data window saying "Stopped".

3.2.3 Sample Interval

Use the Sample Interval control to specify the logging rate before starting to log data.



Any sampling rate may be specified, but invalid sampling rates will be rounded to the nearest multiple of 1ms when logging starts. Data points may be missed at fast sampling rates on slower PC systems. Missed data points are indicated with a red cross.

The fastest logging rate possible without missing any samples may be increased by doing one or all of the following:

- Log on only one channel
- Disable tracking
- Log in raw data format rather than formatted data

3.2.4 Channel Enable Buttons

The channel enable buttons can be used to enable or disable a logging channel. When enabled, the channel enable buttons are coloured.



If the channels are disabled, they are greyed out.



These buttons are disabled while the data logger is acquiring data.

3.2.5 Slide Bar

The slide bar allows scrolling through the logged data.



The chart display is updated as the scroll bar is moved. If tracking is enabled, the scroll bar is disabled while running.

The slide bar can be operated by dragging the handle or by clicking the triangular buttons at each end of the bar.

3.2.6 Scale Panel

The scale panel indicates the area of the chart currently visible. The default values before logging are shown below.

Axes	Min	Max	Range
X	0	100	100
Y	-10	10	20

These values are updated when data is logged or if scaling values are changed.

3.3 Toolbar Buttons

3.3.1 Open Chart

Clicking on the Open Chart button will display an open dialog box.



The user can then browse to a file of type .dlog (data logger format) which can then be imported back into the data logger for viewing. Files of the raw data format (.rdl) may also be loaded. Data from a .rdl file will be formatted and displayed as normal. If a .dlog file with the same name exists this can be used to display stored values (i.e. sample rate, maximum, minimum and memos).

Please note that files of type .dlog and .rdl cannot be viewed as text. To export data as text for analysis in 3rd party applications please export the data as text or comma separated values (.csv).

3.3.2 Save Chart

Clicking the Save Chart button produces a save dialog box that allows the user to save the current data chart in a variety of formats.



Either the data chart or load chart (selectable through the [Window menu](#)) may be saved.

Bitmap (*.bmp)

Selecting the bitmap option saves the area of the data chart which is currently visible to a bitmap picture file. This option will not allow access to the actual data for analysis or the data to be reloaded to the data logger for display.

Comma Separated Values (*.csv)

Selecting to export as .csv exports all of the chart data to a .csv file complete with start and stop markers which can then be analysed in 3rd party packages. Information on missed or clipped points is also included. .csv files are automatically associated with Microsoft Excel if it is installed.

Please note that Excel can only handle a maximum of 65536 lines of data. This limits the amount of logged data that can be viewed from a .csv file. If there are more than 65536 lines to write to the .csv file, the later lines are not available. It is possible to get around this by editing the .csv in a text editor (such as notepad), re-saving and then opening in Excel. This file format cannot be reloaded to the data logger for display.

Text (*.txt)

Exporting as text write all data points and headers to a text file. Unlike .csv files, text files are not limited to 65536 data points. This will allow access to the logged data for external analysis, but cannot be loaded into the data logger to display the chart.

Data Log Format (*.dlog)

The data log format cannot be used externally by other programs. It can however be used to reload previously logged traces to the load chart window. When a .dlog file is loaded, it can be re-exported as a bitmap, .csv or .txt file.

3.3.3 Print Chart Area

Clicking the Print Chart button prints the current chart area of the data logger.



The data printed can be changed by using the [slide bar](#), [zoom controls](#) or switching between [data1 and load windows](#).

3.3.4 Copy Chart to Clipboard

Clicking the Copy Chart to Clipboard button places a copy of the current chart area on the Windows clipboard.



This allows an image of the current plot area to be pasted into a document or spreadsheet.

3.3.5 Zoom In/Out

The Zoom In/Out button allows the user to enlarge areas of the chart.



To zoom in, click the button and then click and drag an area on the chart. This will display the selected area stretched to fill the full range of the chart screen. Alternatively, click the Zoom In/Out button and then simply left click on the chart area to zoom in. The minimum number of samples that can be displayed is 10.

To zoom out, click the Zoom In/Out button and then right click on the chart area.

3.3.6 Zoom Full

The Zoom Full button scales the x-axis to display the number of data points specified in Max Samples of the Settings section of the [Edit menu](#).



To change the number of data points stored in memory, see Settings from the [Edit menu](#). The default value is 10000 samples.

3.3.7 Cursors

Three cursors are available. These are:

Data Cursor



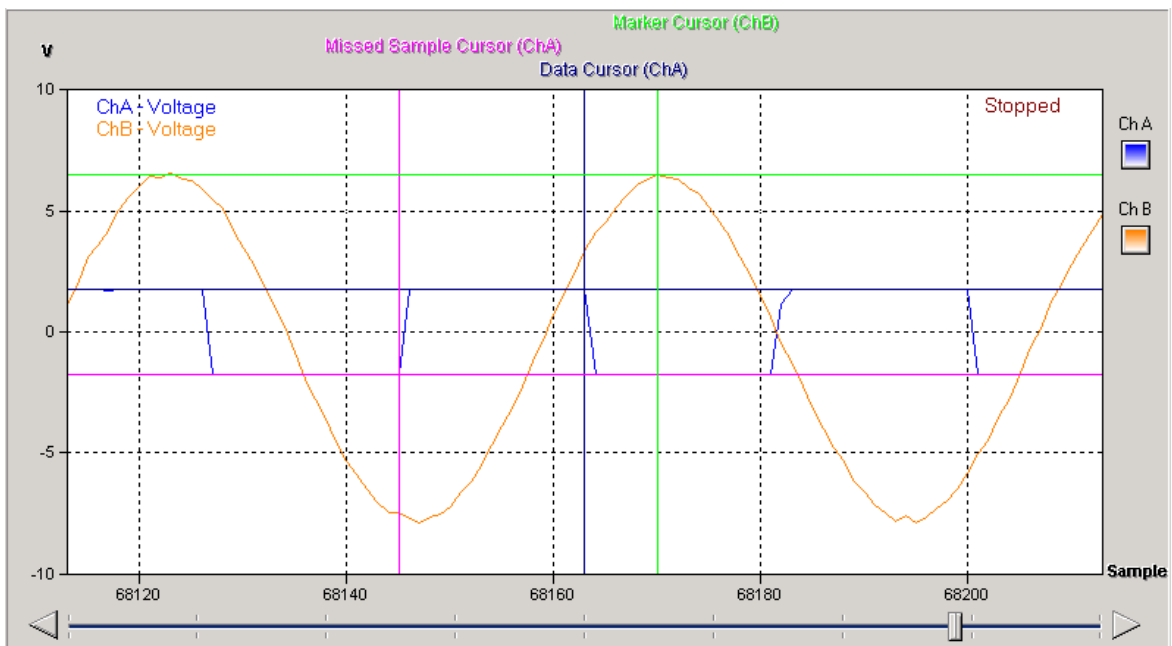
Missed Sample Cursor



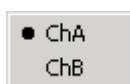
Marker Cursor



They have different colours and names to allow them to be distinguished easily.



By right clicking on the cursor icons on the main toolbar, the user may select whether the cursor is associated with channel A or channel B by selecting the desired channel from the pop-up menu (shown below).



Each of the cursors can be moved by dragging the name label horizontally. Vertical dragging will have no effect as the cursors automatically track the data line.

The x and y coordinates of each active cursor are displayed in the Cursor Panel at the bottom left of the main window.

Cursors	Data	Missed	Marker	Delta
X	68,163	68,145	68,170	
Y	1.749	-1.728	6.471	

The delta column can be made to display the differences in x and y between two of the cursors. Right click on the word "Delta" and the following menu will appear:

Select Delta
Data - Missed
Data - Marker
Missed - Marker
Off

Selecting "Data - Missed", "Data - Marker" or "Missed - Marker" will display the differences between those cursors. The delta values can be turned off by selecting "Off". The following example shows the differences in x and y values between the Data and Missed cursors for the trace given above.

Cursors	Data	Missed	Marker	Data - Miss
X	68,163	68,145	68,170	18
Y	1.749	-1.728	6.471	3.477

3.3.8 TestMode Waveform

Clicking on the TestMode Waveform button activates the EasyLogger test mode. This produces a saw-tooth waveform without any input to the device.



Any input to the device will be ignored while test mode is active. The frequency of the waveform is 30.518Hz.

3.3.9 Signal Generator

Clicking the Signal Generator button shows the [Signal Generator Window](#).



This window allows the output from the signal generator to be configured. This is disabled while the logger is running.

3.3.10 Memo Window

Clicking the Memo Window button shows the [Memo window](#).



This allows markers and information to be added to the chart.

3.3.11 Info Window

Clicking the Info Window button shows the [Info Window](#).



The Info Window displays information about the current chart.

3.3.12 X-Control Window

Clicking the X-Control Window button shows the [X-Control Window](#).



This allows the range and scale of the x axis to be changed.

3.3.13 Y-Control Window

Clicking the Y-Control Window button shows the [Y-Control Window](#).

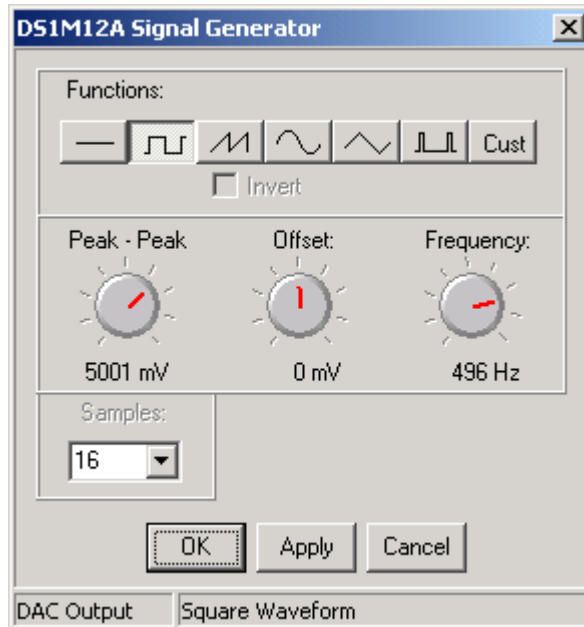


This allows the range and scale of the y axis to be changed.

3.4 Sub Panel Functions

3.4.1 Signal Generator Window

Selecting the [SignalGen](#) option from the run menu or clicking the [Signal Generator button](#) from the main toolbar displays the configuration window for the signal generator output (shown below).



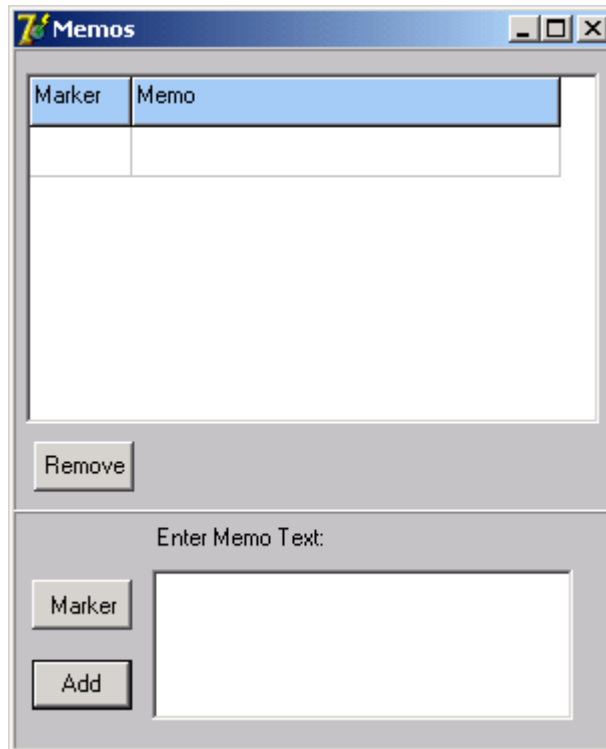
This allows the operator to select a pre-defined waveform from

- DC output
- Sawtooth
- Square
- Sine
- Triangle
- Pulse

Each of these waveforms may be adjusted in amplitude, ground offset and frequency. In addition, there is an option to load a custom waveform from a .CSV file. This file should have one column of millivolt values, one for each sample. The maximum number of samples permitted is 1024. If the file contains more than 1024 data points, only the first 1024 points will be used to generate the pattern.

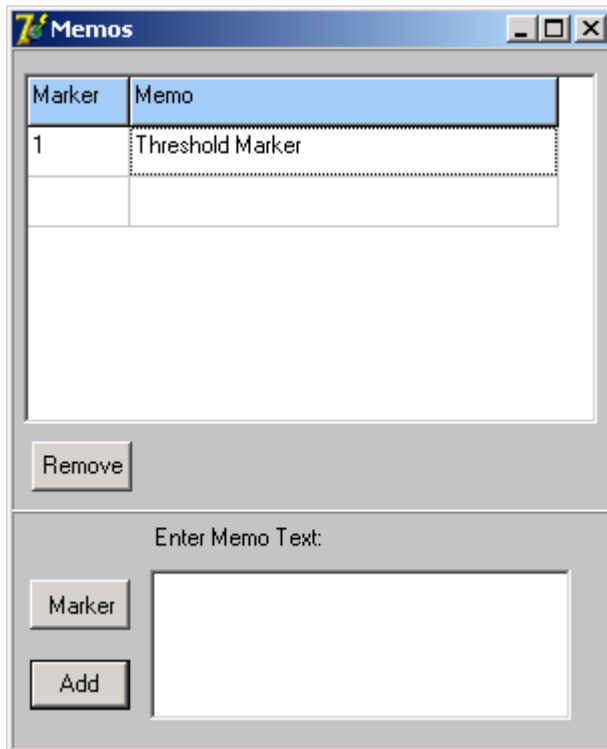
3.4.2 Memo Window

The Memo Window is shown below.

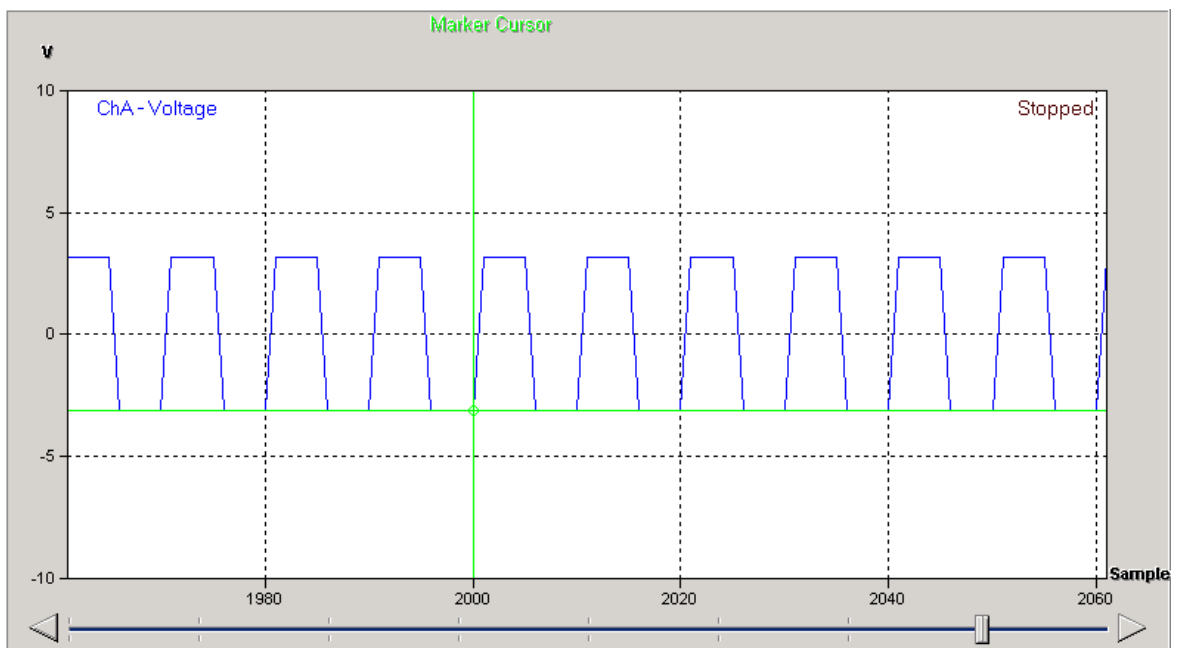


This can be used to manually comment the data on the chart.

To do this, click "Marker" and click on the chart where the marker is desired. This will add the marker to the chart. Next, type a memo in the memo text box and then click "Add". This will add the text to the memo list.



This process may be repeated to add multiple markers to the chart. The markers appear as green circles by default.

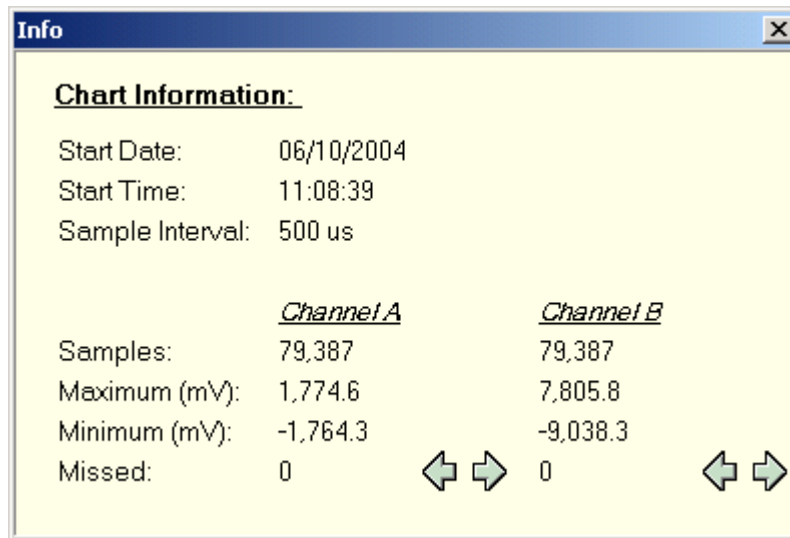


Double-clicking on a memo in the memo window will jump to the corresponding marker on the chart.

To remove markers, simply select the marker from the list in the Memo Window and click "Remove".

3.4.3 Info Window

The Info Window contains general data for the current chart, such as start date, start time and sample interval for each channel. An example is given below.

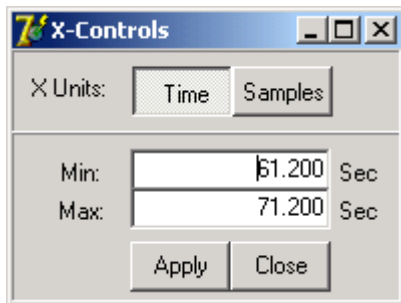
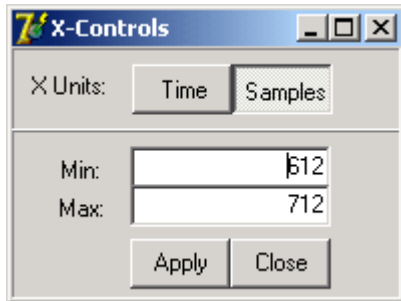


In the event that there are missed samples in the trace, the total number of missed samples is indicated next to "Missed:". The arrows may be used to seek the missed data points. When a missed data point is found using the arrow buttons, the missed cursor is applied at the same point to highlight the location.

3.4.4 X-Control Window

The X-Control window is shown below and provides manual control over the X-axis.

The scale unit may be changed between time and number of samples by clicking the "Time" and "Samples" buttons respectively.

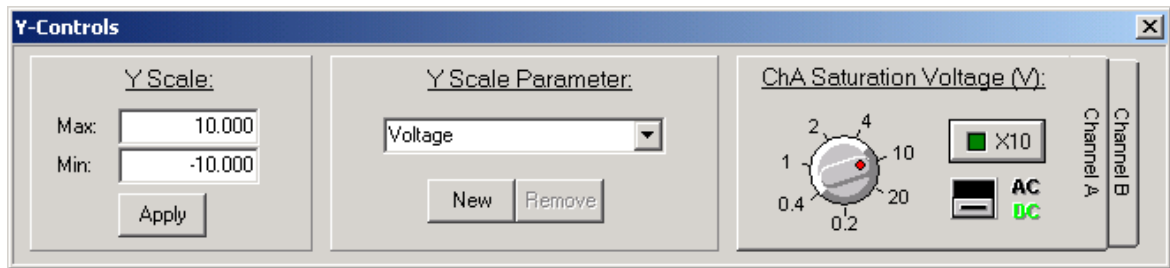


Values for the maximum and minimum scales values may then be entered in the text boxes and the display is updated when the "Apply" button is clicked.

The scale units may also be switched between number of samples and time by clicking on the axis label on the chart.

3.4.5 Y-Control Window

The Y-Control window (shown below) allows the chart Y-scale to be customised.



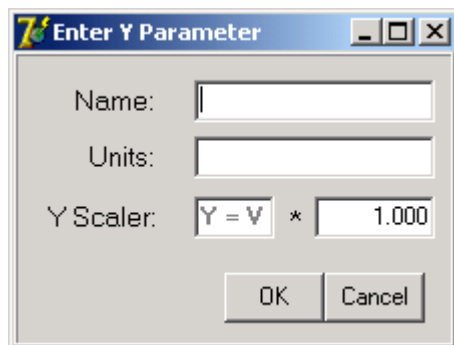
The window is divided into three sections. Each is described below:

Y-Scale

This allows the range of the Y scale to be manually adjusted. Simply enter the desired maximum and minimum values in the text boxes and click "Apply" to change the scale.

Y-Scale Parameter

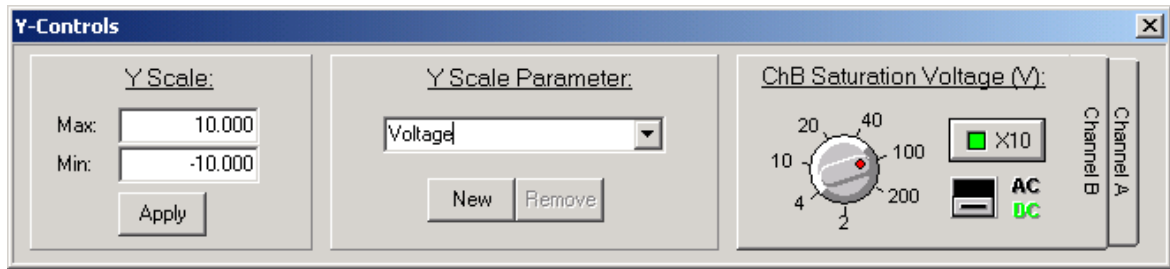
This allows the units of the Y-axis to be changed. Volts (V) and milli-Volts (mV) are provided by default, but custom units may be created by clicking the "New" button and filling in the form below. Click "OK" to add the new units to the list of available units.



Custom units can be removed from the list by selecting them from the combo box and then clicking "Remove".

Saturation Voltage (V)

This panel provides control over the ADC saturation Voltage limit and coupling for channel A and channel B. In addition, activating the "X10" button as this will re-scale for a X10 probe as indicated below. Channel A or channel B can be configured by selecting the appropriate tab from the right hand edge of the Saturation Voltage panel.

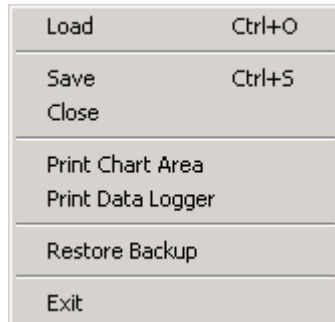


If the Voltage saturation level is exceeded, the data will be clipped to the saturation value and displayed in a different colour. The colour for clipped data can be customised through the [View menu](#). If data is clipped, a memo is added in any exported file to indicate that clipping has occurred.

3.5 Menu Functions

3.5.1 File Menu

The File menu (shown below) provides alternative access to functions available on the main toolbar.



Load

This provides the same functionality as the [Open Chart](#) button from the toolbar. An open dialog box is shown for the user to select a .dlog or .rdl file to load to the load chart.

Save

This provides the same functionality as the [Save Chart](#) button from the main toolbar. A save dialog box is shown that allows the user to save the current data as a bitmap file (*.bmp), a comma separated values file (*.csv), a text file (*.txt) or a data logger format file (*.dlog). Data may be saved from either the data chart or the load chart.

Close

The close option clears the selected chart. If the Load chart is displayed, the chart is cleared and is no longer selectable from the [Window menu](#). If the Data chart is displayed, the chart is cleared in the same way as Clear Screen from the [Edit menu](#).

Print Chart Area

This provides the same functionality as the [Print Chart Area](#) button from the main toolbar.

Print Data logger

This option sends the whole data logger panel image to the printer rather than just the plot area. This can provide a useful record of the data logger settings used to acquire the trace.

Restore Backup

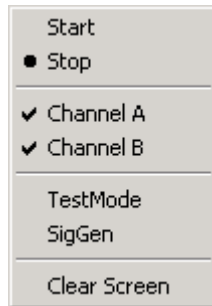
Selecting Restore Backup will load data from the previous run if "Backup Data on Exit" is enabled in the Settings section of the [Edit menu](#). If "Backup data on Exit" is disabled, the option will be greyed out.

Exit

The Exit option allows the user to quit the application and has the same function as the Windows Close button .

3.5.2 Run Menu

The Run menu (shown below) provides access to the following functions:



Start

This provides the same function as clicking the [Start Button](#). Selecting "Start" begins data logging with the specified sample rate and Voltage saturation limit.

Stop

This option provides the same functionality as the [Stop Button](#). Selecting "Stop" will terminate data logging.

Channel A

Selecting Channel A will enable or disable channel A in the same way as clicking the [Channel Enable button](#) for channel A. When the channel is enabled, a tick is visible next to the channel name.

Channel B

Selecting Channel B will enable or disable channel B in the same way as clicking the [Channel Enable button](#) for channel B. When the channel is enabled, a tick is visible next to the channel name.

TestMode

Selecting TestMode activates the EasyLogger test mode in the same way as the [TestMode Waveform](#) button from the main toolbar. This creates a saw-tooth waveform with a frequency of 30.518Hz.

SigGen

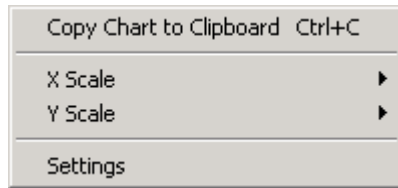
Selecting SigGen brings up the [Signal Generator Window](#) for configuring the signal generator output. This has the same functionality as the [Signal Generator button](#) on the main toolbar.

Clear Screen

Selecting Clear Screen removes all data from the data chart. This option is disabled if the load chart is selected.

3.5.3 Edit Menu

The Edit menu (shown below) allows access to the following functions:

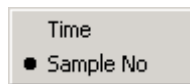


Copy Chart to Clipboard

This option provides the same functionality as the [Copy Chart to Clipboard](#) button on the main toolbar. This copies an image of the chart area to the Windows clipboard for pasting into documents or spreadsheets.

X Scale

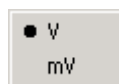
Selecting X Scale displays the following sub-menu.



This allows the units of the X-axis to be changed between time and sample number. The units of the X-axis can also be changed through the [X-Control Window](#) or by clicking on the axis label.

Y Scale

Selecting Y Scale displays the following sub-menu.



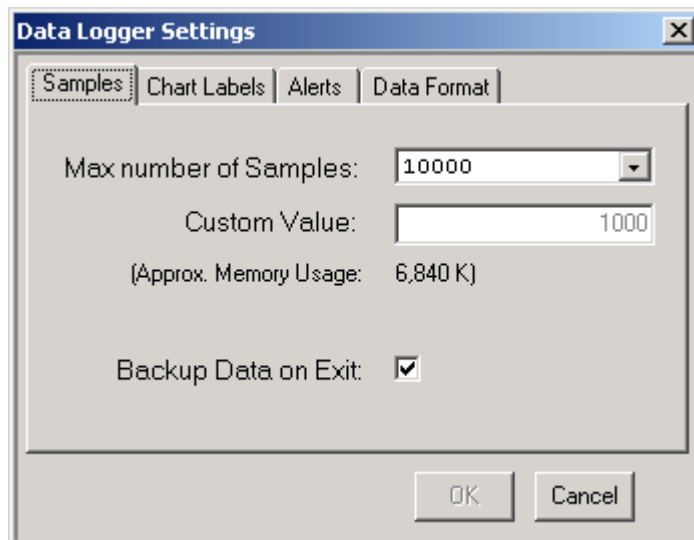
This allows the units of the Y-axis to be changed between the default units of V (Volts) and mV (millivolts). The units of the Y-axis can also be changed through the [Y-Control Window](#). To display custom units on the Y-axis, use the [Y-Control Window](#). The units of the Y-axis may also be changed by clicking on the axis label.

Settings

Through the settings option, a window appears which allows access to four tabs: Samples, Chart Labels, Alerts and Data Format.

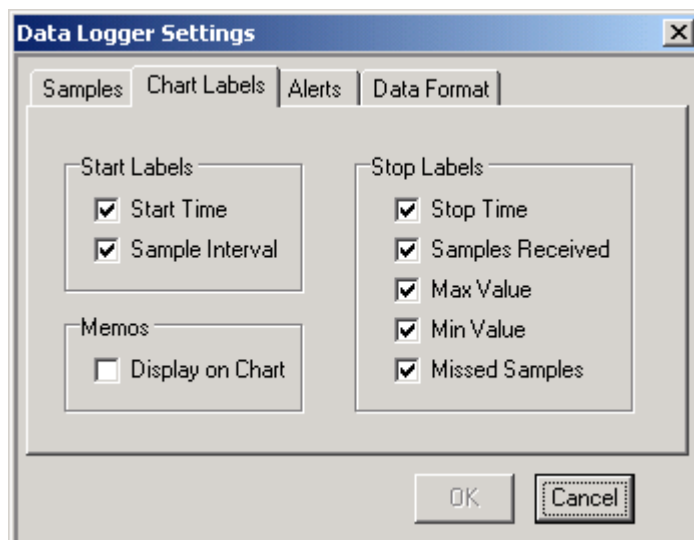
- Samples

The samples tab is shown below. The "Max number of Samples" value is the maximum number of samples that may be displayed on the X-axis at [Zoom Full](#). All data is written to a file and only the currently visible data is in memory. The figure quoted for "Approx. Memory Usage" is for when the maximum number of samples is being displayed.



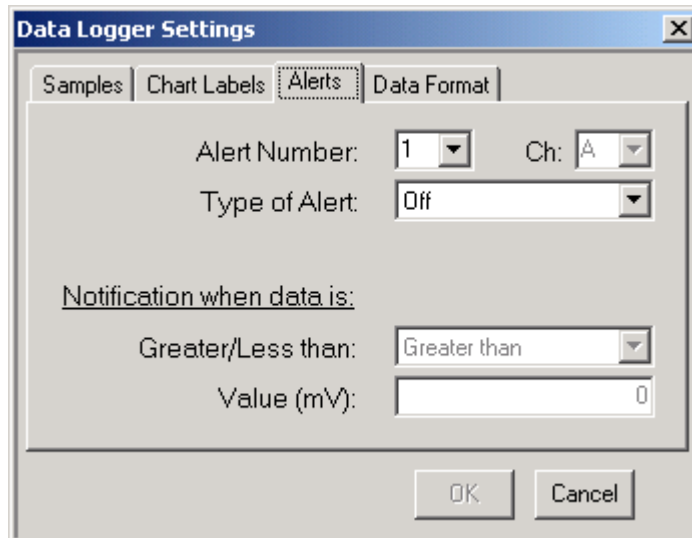
- Chart Labels

The chart labels tab is shown below. This allows customisation of which text labels are visible on the chart at the start and stop markers. Please note that regardless of which options are checked here, all exported data files will contain all of this information. Checking the "Display on Chart" option for memos shows memos on the chart area.



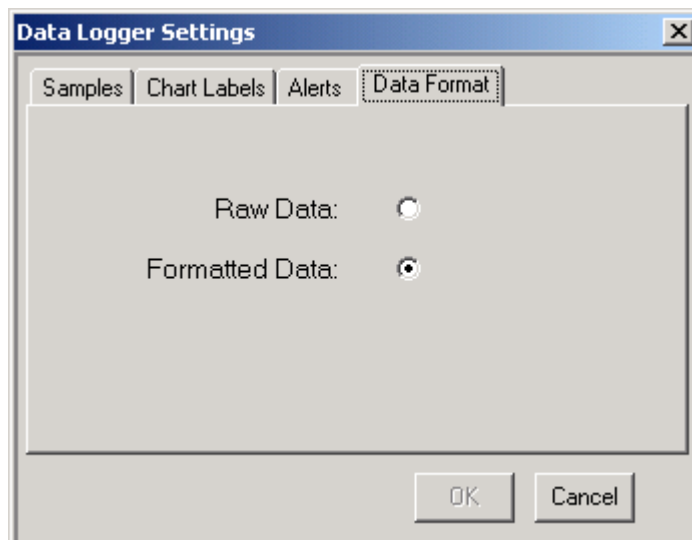
- Alerts

The alerts tab is shown below. This can be used to configure up to four alerts to flag when the logged data reaches a critical value. Alert types are pop-up windows, e-mails or both. A valid e-mail address and network connection are required for the e-mail alerts. Alerts can be configured for when values are greater than or less than some value on either channel A or channel B.

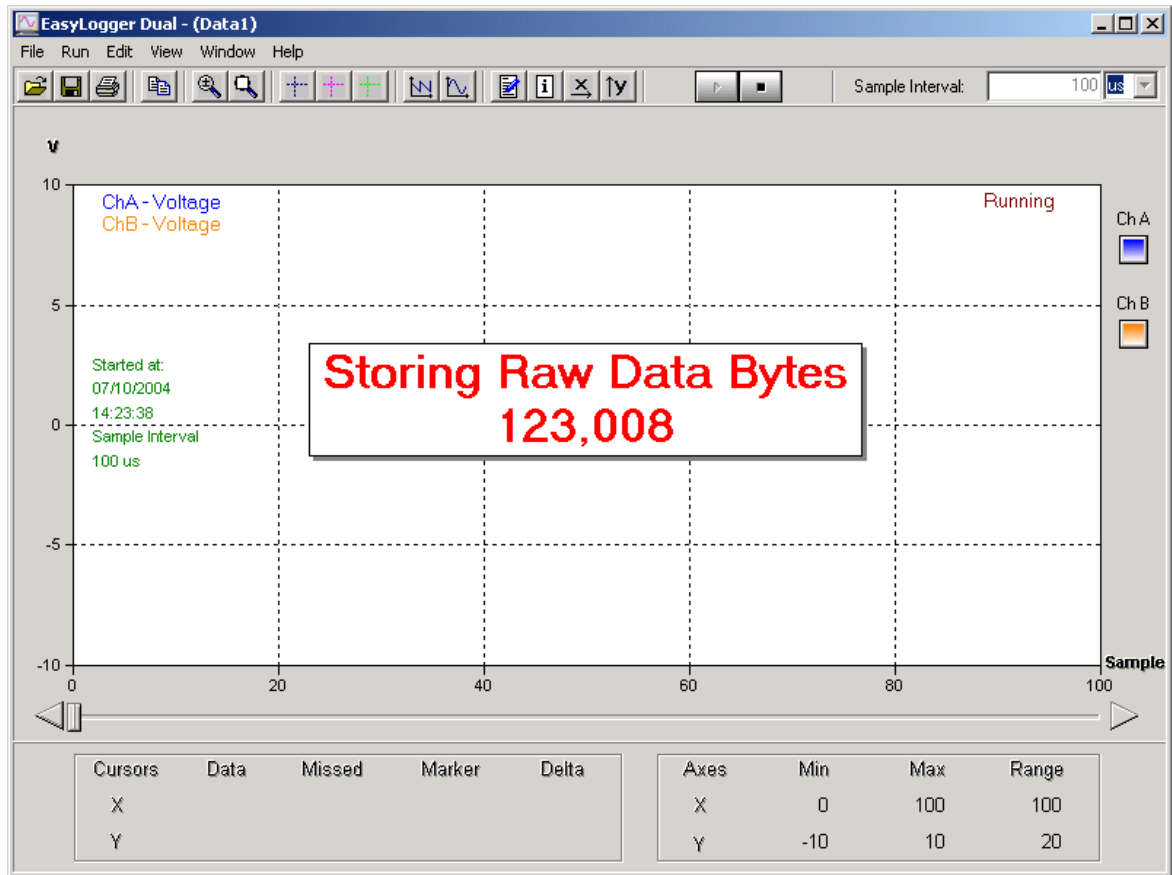


- Data Format

The Data Format tab is shown below. This controls whether the data is stored in its raw state or is formatted. Raw data storage allows faster logging times, but the display is not updated while logging is in progress. When logging is terminated, the data is processed and the display updated. Raw data files have a .RDL extension while formatted data files have a .DLOG extension.

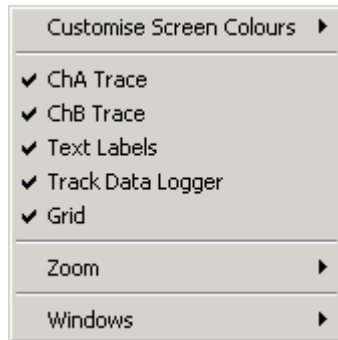


The following screen shows an example of the message displayed while data is being logged in .rdl format.



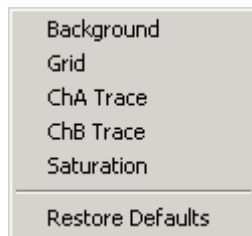
3.5.4 View Menu

The View menu (shown below) allows the user to change the appearance of the EasyLogger.



Customise Screen Colours

Selecting Customise Screen Colours shows the following sub-menu:



Selecting any of the options available on this sub-menu allows the user to select a new colour for the selected item. Selecting "Restore Defaults" resets all colour settings to the original colours.

ChA Trace

This allows trace A to be made visible or invisible. This option does not affect if data is logged or not. To enable/disable logging on channel A, use the [Channel Enable Button](#) on the front panel or toggle Channel A from the [Run menu](#).

ChB Trace

This allows trace B to be made visible or invisible. This option does not affect if data is logged or not. To enable/disable logging on channel B, use the [Channel Enable Button](#) on the front panel or toggle Channel B from the [Run menu](#).

Text Labels

Selecting Text Labels will check or un-check the text labels option. This will toggle whether start and stop marker text labels are shown on the chart or not.

Track Data Logger

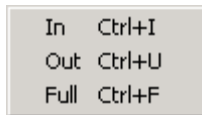
Selecting Track Data Logger will check or un-check the tracking option. This will toggle whether the chart updates constantly to show the newly acquired data or allow the display to remain static. The [slide bar](#) is disabled if tracking is enabled and the [slide bar](#) is enabled if tracking is disabled.

Grid

Selecting Grid will check or un-check the grid option. This will toggle whether the grid is shown on the chart or not.

Zoom

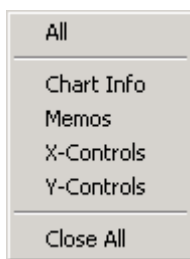
Selecting Zoom from the menu displays the Zoom sub-menu (shown below).



These functions provide the same functionality as the [Zoom In/Out](#) and [Zoom Full](#) buttons and can be used to enlarge or shrink an area of the display. Keyboard shortcuts are also indicated in the menu.

Windows

Selecting Windows from the menu displays the Windows sub-menu (shown below).

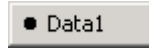


This provides the same control over which windows are visible as the [Memo Window](#), [Info Window](#), [X-Control Window](#) and [Y-Control Window](#) buttons on the main toolbar. In addition, there are options to display all windows or to close all windows.

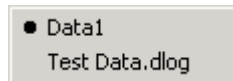
3.5.5 Window Menu

The Window menu allows the user to select whether the data chart or the load chart data is displayed.

By default, the load window is not selectable as there is no file loaded.



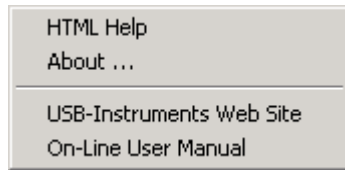
If a .dlog or .rdl file is loaded using either the [Open Chart](#) button or the Load option from the [File menu](#), the load chart becomes selectable from the window menu. The following example shows the window menu after a .dlog file called Test Data.dlog has been loaded.



The window currently displayed is indicated by a ●.

3.5.6 Help Menu

The following options are available through the Help menu (shown below).



HTML Help

Selecting HTML Help from the menu will launch this help file.

About ...

The About ... option displays version information and release dates.


USB-Instruments Web Site

This will connect to the Internet and take the user directly to the USB Instruments web site where information can be found on products and updates.

On-Line User Manual

This option will take the user to the EasyLogger manual section of the USB Instruments web site.

3.6 Quitting EasyLogger

EasyLogger can be exited by either accessing the Exit option of the [File menu](#) or clicking the Windows Close button  in the top right-hand corner of the window.

4 Appendix

4.1 Error Messages

4.1.1 RBF File Not Found

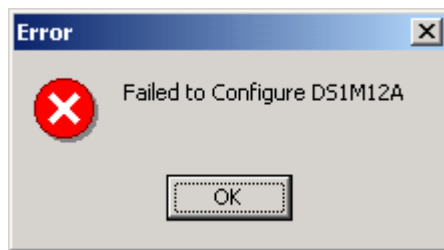
This error occurs when EasyLogger cannot find the file to program the DS1M12 hardware.



To resolve this problem click "OK", quit the EasyLogger application and check that the file DDL1M12.rbf exists in the same directory as the EasyLogger application program. If the file is there, try to re-launch the EasyLogger application ensuring that the instrument is connected to the PC. If the file is not there, it may be retrieved by browsing the installation CD and copying it to the same location as the EasyLogger application.

4.1.2 Failed to Configure DS1M12

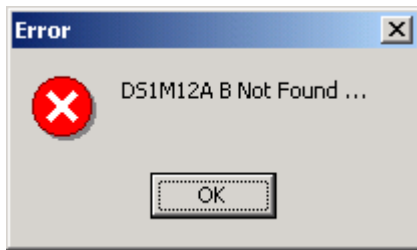
This error occurs when the EasyLogger application cannot detect any instruments connected to the PC when it is launched.



Ensure that the instrument is connected to the PC and that the correct drivers are installed, then re-launch the EasyLogger application.

4.1.3 DS1M12A B Not Found ...

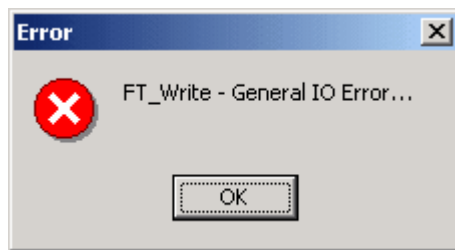
This error can occur when trying to run the EasyLogger application with no DS1M12 hardware connected to the PC.



To resolve this, connect a DS1M12 to the PC and run the application again. If this has no effect, check that the drivers are installed correctly.

4.1.4 FT_Write - General IO Error ...

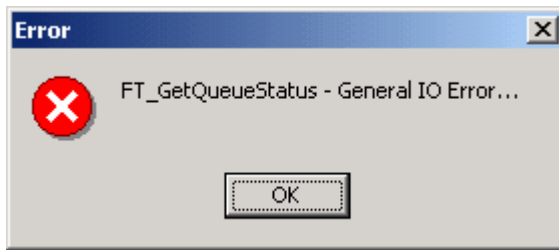
This error may occur if the DS1M12 is unexpectedly disconnected from the PC while the program is running.



A message box with this error may appear several times but will clear and run as normal after clicking "OK" on each message box that appears.

4.1.5 FT_GetQueueStatus - General IO Error ...

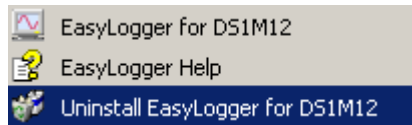
This error may occur if the DS1M12 is unexpectedly disconnected from the PC while the program is running.



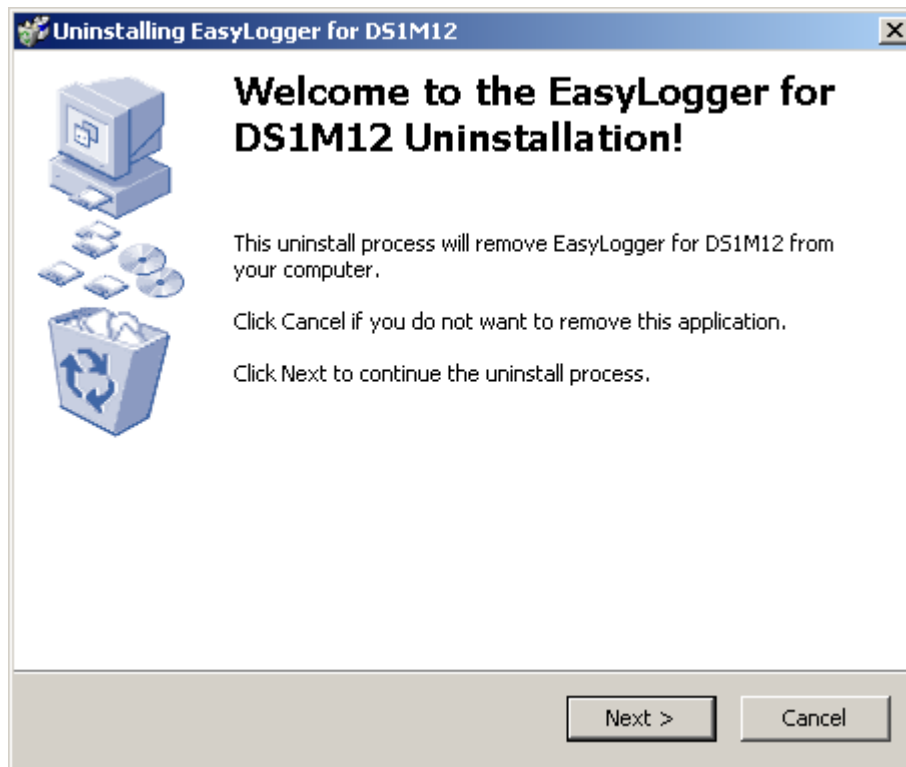
A message box with this error may appear several times but will clear and run as normal after clicking "OK" on each message box that appears.

4.2 Uninstalling EasyLogger

From the Start -> Programs -> USB Instruments DS1M12 menu on the Windows Toolbar, select the Uninstall DS1M12 Option and click on it.

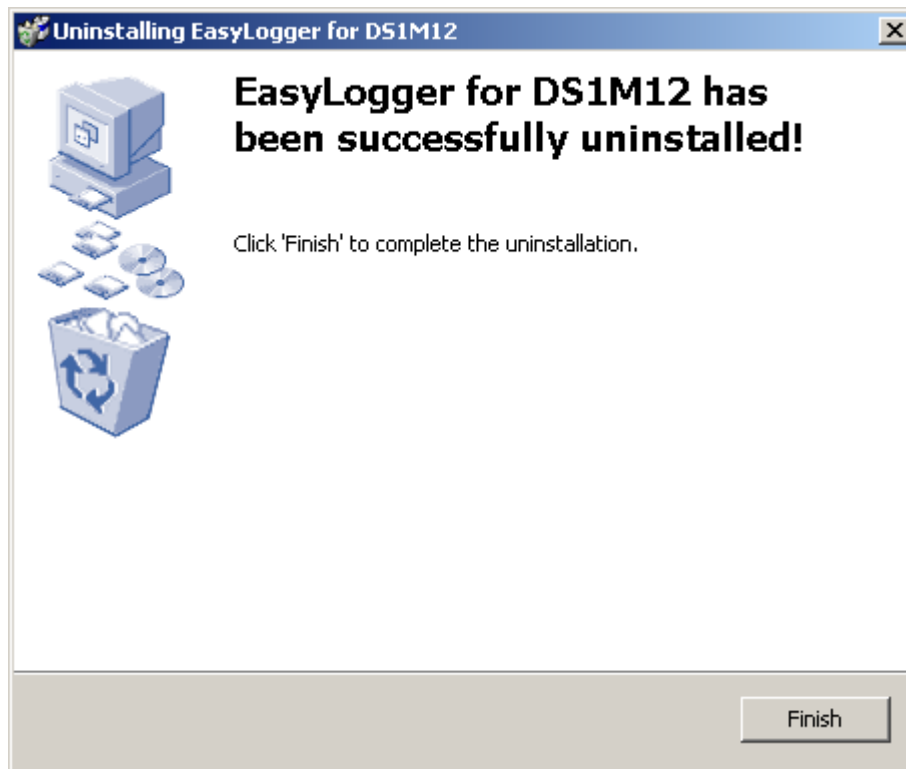


This will start the uninstaller program. The following confirmation screen will appear.



If you are sure you want to uninstall the EasyLogger Program, click on "Next". If not, click on "Cancel" to abort the Uninstall process.

Clicking on "Next" starts the uninstall sequence. When the EasyLogger Software is run for the first time, it automatically creates an INI file (easyscope.ini) to store program settings and two BMP files (DSBright.bmp and DSNormal.bmp) containing the images of the Normal and Bright screen themes. It is safe to delete these if asked by the uninstaller. In the course of using EasyLogger the user may have saved some screen images and should decide if they want to keep these or not.



Click on "Finish" to complete the uninstallation.

Index

- * -

*.bmp 20, 21, 23
 *.csv 20, 21, 35
 *.dlog 20, 21
 *.txt 20, 21, 35

- . -

.bmp 20, 21, 23
 .csv 20, 21, 35
 .dlog 20, 21
 .txt 20, 21, 35

- A -

about 51
 acquire 14, 43
 alert 44
 alerts 44
 area 19

- B -

bar 18
 begin 14, 43
 bitmap 20, 21, 23
 bmp 20, 21, 23
 buffer 18

- C -

capture 14
 CD 5
 chart 19, 22, 30, 31, 35, 38, 50
 clear 43
 clear screen 43
 clipboard 44
 clipping 33, 40
 close 42
 colours 48

comma 20, 21, 35
 comma separated values 20, 21, 35
 control 13, 24, 25, 26, 32, 39, 48
 controls 13
 copy 23, 44
 csv 20, 21, 35
 cursor 26
 cursors 26
 custom 30, 35, 40
 customise 48
 customise screen colours 48

- D -

data 18, 20, 21, 26, 38
 data log format 20, 21
 Data1 50
 date 38
 delta 26
 difference 26
 display 19, 20, 21, 50
 dlog 20, 21
 driver 10
 drivers 10

- E -

EasyLogger 3, 4, 5, 10, 13, 14, 15, 16, 18, 19, 20,
 21, 22, 24, 25, 26, 28, 30, 31, 32, 33, 35, 38, 39, 40,
 42, 43, 44, 48, 50, 51, 52, 53, 54, 55, 56, 57, 58
 e-mail 44
 erase 43
 error 53, 54, 55, 56, 57
 exit 42, 52
 export 21, 35, 42

- F -

failed 54
 failed to program penscope hardware 54
 features 4, 13
 file 42, 53
 file menu 42
 file not found 53
 format 20, 21
 found 53, 55

frequency 16
FT_GetQueueStatus 57
FT_Write 56
full 25, 48
functions 13

- G -

General IO Error 56, 57
go 43
grid 48

- H -

halt 15
hardware 54
help 51
HTML 51
HTML help 51

- I -

image 22, 42, 44
import 20, 42
in 24, 48
info 31, 38, 48
info window 48
install 5, 10, 58
installation 5, 10, 58
installing 5, 10, 58
instrument 13, 14, 15, 16, 18, 51, 52, 53, 54, 55,
56, 57, 58
introduction 3
IO 56, 57

- L -

label 30, 35
labels 44, 48
load 20, 42, 50
log 14, 15, 16, 20, 21
logging frequency 16
logging rate 16

- M -

marker 26, 30, 35
markers 44
maximum 38
memo 30, 35, 48
memo window 48
memory 44
menu 42, 43, 48, 50
message 44
milliVolts 40, 44
milli-Volts 40, 44
minimum 38
missed 16, 26, 38
mode 28, 43
mV 40, 44

- O -

on-line 51
open 20, 42
operating system 3
OS 3
out 24, 48
overview 13

- P -

panel 26
paste 23
penscope 51, 52, 53, 54, 55, 56, 57, 58
picture 22, 23, 42, 44
pop-up 44
print 22, 42
program 54
ps40m10b 55
ps40m10b not found 55
PSDLOG.rbf 53

- Q -

quit 42, 52

- R -

range 19, 24, 25, 32, 33, 39, 40
rate 16
remove 58
run 14, 43
run menu 43

- S -

sample 16
sample rate 16, 38
samples 38, 39, 44
sampling rate 16
saturation 33, 40
save 21, 35, 42
scale 24, 25, 32, 33, 39, 40, 44
scale 19
screen 43
scroll 18
separated 20, 21, 35
settings 44
slide 18
slide bar 18
software 5, 13, 51, 52, 53, 54, 55, 56, 57, 58
specification 4
start 14, 38, 43
stop 15, 43

- T -

terminate 43
test 28, 43
testmode 28, 43
text 20, 21, 35, 48
text labels 48
time 38, 39, 44
toolbar 20, 21, 26, 28
track 48
track data logger 48
tracking 48
txt 20, 21, 35

- U -

uninstall 58
un-install 58
uninstallation 58
un-installation 58
uninstalling 58
un-installing 58
units 32, 33, 39, 40
USB 3, 10
usb instruments 51
user 51
user manual 51

- V -

V 40, 44
values 20, 21, 35
view 48
view menu 48
Volts 40, 44

- W -

waveform 28
web 51
web site 51
welcome 3
window 30, 31, 32, 33, 35, 38, 39, 40, 44, 50
window menu 50
windows 48
wizard 10

- X -

X 32, 39, 44, 48
X-Control 32, 39, 48
X-Control Window 48
X-scale 44

- Y -

Y 33, 40, 44, 48
Y-Control 33, 40, 48
Y-Control Window 48

Y-scale 44

- Z -

zoom 24, 25, 48

zoom full 48

zoom in 48

zoom out 48